

Datenblatt: Self Service Kiosk 27"

27" PCAP Self Service Kiosk



Self-ordering touch screen solution for quick service restaurants with integrated QR code scanner and receipt printer

All-in-One Automated Self Ordering System




The numerous benefits for self service systems are clear, from allowing staff to focus more on customer service, reducing queues and waiting times as well as improving and optimising the overall customer experience. This all-in-one solution is designed for the fast food sector but can also be used in a range of retail spaces providing a PCAP touch screen, QR Code scanner, printer in one solution. There is also space to integrate a credit card payment reader.



Integrated Epson Printer

The integrated printer provides a fast and reliable printing solution for the kiosk and can be used to print receipts and promotional vouchers. The printer is designed to not only be easy to use but also easy to maintain for businesses. With Epsons advanced technology, the inkless thermal printer can print receipts up to 250mm/sec with additional options that can reduce paper usage up to 30%.



-  24/7 Commercial Grade
-  Anti-Vandal Glass and Mounting
-  Integrated QR Code Scanner
-  Integrated Receipt Printer
-  Easy Access Maintenance
-  10-Point PCAP Touch
-  Optional Software Packages
-  Integrated Windows PC
-  Optional NFC Card Reader
-  3 Year Commercial Warranty

Datenblatt: Self Service Kiosk 27"

Other Features

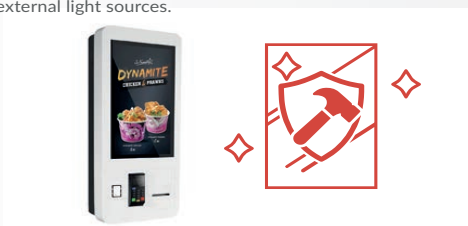
Built-in High Performance Windows PC

There is a powerful built-in Intel core i5 Windows PC that can deliver impressive performance 24/7. The windows PC is flexible to the way you want to work, for example if your application runs on Android or Linux these operating systems are also supported by the hardware.



Super Durable Protective Glass

The glass front is not only thermally toughened but also has a special anti-scratch 6H hardness coating. There is also a special coating on the panel which reduces annoying reflections created by external light sources.



Anti-Theft Mounting Options

As standard the kiosk can be securely mounted directly to the wall from inside the lockable door – providing an anti-theft flush fit. There is also an optional floor stand available on request when wall mounting is not possible.



Easy Maintenance and Cleaning

Tool-free maintenance is possible via the lockable front access door, allowing store staff to swap out and replace components without having to remove from the wall. The touch screen and barcode scanner are also recessed into the enclosure for a wipe clean surface.



24/7 Constant Use

As many quick service restaurants and supermarkets are open 24/7 any kiosk solution needs to be up to the task of being in continuous use.



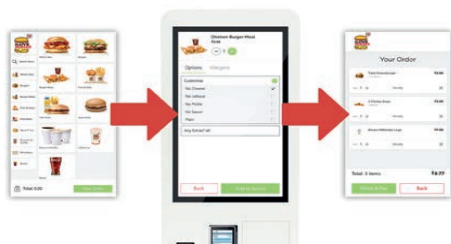
Easy Roll Replace

The till roll for the thermal printer is located in a separate compartment so that staff can quickly and conveniently replace the roll without having to open the main access door.



Software Packages Available

You can use your own software solutions or we can offer various bespoke packages on request.



Customisable

Other sizes and colours are available on request. We can also design and manufacture bespoke units with an integrated camera or double-sided versions. For existing models we offer a coloured vinyl wrap service as well as custom logo and graphics.



Custom Branding & Logo



Datenblatt: Self Service Kiosk 27"

Key Features



10-POINT PCAP TOUCH SCREEN



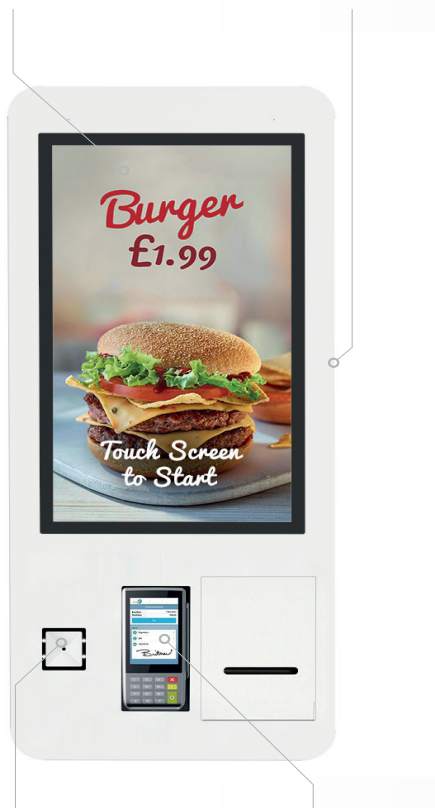
INTEGRATED SPEAKERS



INTEGRATED WINDOWS PC



VANDAL PROOF HIGH GAIN
WI-FI AERIAL



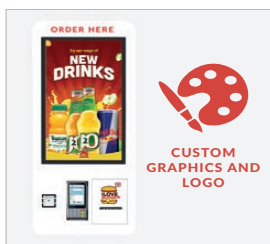
BARCODE SCANNER

CARD READER SPACE*

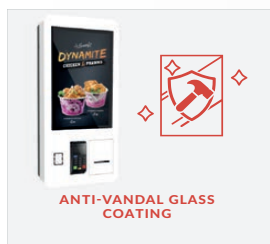


OPTIONAL NFC CARD READER

QUICK ACCESS PRINTER



CUSTOM
GRAPHICS AND
LOGO



ANTI-VANDAL GLASS
COATING



OPTIONAL FLOOR STAND



ANTI-THEFT WALL
MOUNTING

*Card Reader Not Included

Datenblatt: Self Service Kiosk 27"

Specification Table

		27 Inch
Panel	Resolution	1080x1920
	Display Area (mm)	336.2x597.6
	Pixel Pitch (mm)	0.3114x0.3114
	Aspect Ratio	16:9
	Viewing Angle	178°
	Colour	16.7M
	Contrast Ratio	5000:1
	Brightness (cd/m²)	350
	Response time	5ms
	Lifespan (hours)	70,000
Touch	Touch Technology	Projected Capacitive
	Touch Points	10
	Glass Hardness	6H minimum
Audio	Built-in stereo speakers	8Ω, 5W x 2
Power	Power Consumption (W)	48
	Power Input	AC110~240V (50Hz~60Hz)
Mechanical	Unit Size (WxHxD mm)	462x1075x192.4
	Package Size (WxHxD mm)	1155x560x265
	Mounting Holes (mm)	350x900
	Net Weight (kg)	41
	Gross Weight (kg)	45
	Card Machine Slot Size (WxH mm)	92x193
Environmental	Operating Temperature	0°C to 50°C
	Storage Temperature	-30°C to 60°C
	Operating Humidity	10% to 80%
	Storage Humidity	5% to 95%
Computer	CPU	Intel Core i5-8259U (2.3GHz 3.8GHz Boost) Quad Core
	RAM	8GB DDR4 (2666MHz Expandable to 32GB Dual Slot)
	Hard Drive/Internal Memory	256GB M.2 SSD
	LAN	10/100/1000 Ethernet
	Wi-Fi	Dual-Band 5GHz/2.4GHz 802.11n/ac
	OS	Windows 7, Windows 8, Windows 10, Linux (licence purchased separately)
Printer	Printing Method	Line Thermal
	Available Printing Width	58mm or 80mm
	Printing Speed	Max. 250mm/s
Scanner	Sensing Mode	CMOS
	Light Source	LED (6000K) 900lux @100mm
	Scanning Angle	Omni-directional
	Scanning Speed	30 times/second
	Resolving Power	640x480 pixels
	Reading Accuracy	≥8mil
Accessories	Included	Till Roll Key, Front Access Key, User Manual, Wi-Fi Aerial, Power Cable
	Optional	Floor Stand, Software Package
Standards	Certification	CE, FCC & ROHS
	Warranty Period	3 Year Warranty
Warranty	Technical Support	Lifetime

Errors and omissions excepted



Datenblatt: Self Service Kiosk 27"

Technical Drawing

